

# KWANSEI GAKUIN UNIVERSITY

2024-2025

Over  
view



## What is Kwansei Gakuin?

Kwansei Gakuin is a comprehensive educational institution that offers an integrated education from kindergarten to graduate school, with eight campuses across Japan. Our mission at Kwansei Gakuin, as a learning community based on the principles of Christianity, is to inspire our members to seek their life missions, and cultivate them to be creative and capable world citizens who embody our motto, “Mastery for Service,” by transforming society with compassion and integrity. Since our school was founded, Kwansei Gakuin has aspired to

become an “inclusive community” which is open to everyone, and we continue to be committed to the realization of this goal.

## What is Kwansei Gakuin University?

Kwansei Gakuin University (KGU)—colloquially known as Kangaku—is a private nondenominational Christian university in the Kansai region of Japan. As one of Kansai’s leading private universities, KGU offers bachelor’s, master’s, and doctoral degrees to around 25,000 students in over 80 different disciplines across 14 undergraduate schools and 14 graduate schools.

We will cultivate World  
“Mastery





**Where is Kwansei Gakuin?**

As a comprehensive educational institution, Kwansei Gakuin operates a kindergarten, an elementary school, a junior high school, a high school, two international schools, a junior college, and a university in the Kansai region. Kwansei Gakuin University's main campus is located in the city of Nishinomiya in Hyogo Prefecture, which is under an hour away from the metropolitan areas of Kobe and Osaka, and under 90 minutes away from the heart of Kyoto. The university also has other campuses in the cities of Nishinomiya, Sanda, Osaka, and Tokyo.

Table of Contents	
2	What is Kwansei Gakuin?
4	Kwansei Gakuin's Philosophy and Spirit
5	The Kwansei Grand Challenge 2039, Our Resolve for the Future
6	Kwansei Gakuin University By the Numbers
8	List of All Schools and Departments
10	University Campuses
12	Learning at KGU
14	Major Initiatives at KGU
16	International Exchange Programs
17	Programs Offered in English
18	Partner Institutions Around the World
20	The Kansai Region
22	Structure of Kwansei Gakuin

Citizens who embody  
for Service.”





# Kwansei Gakuin's Philosophy and Spirit

Kwansei Gakuin started in 1889 as a small school with five teachers and 19 students. The founding spirit is inherited by the school motto, school symbol, and architectural style of the school building.



Dr. Walter Russell Lambuth

## The Founder of Kwansei Gakuin

Walter Russell Lambuth, born and raised in China, was an American missionary of the Methodist Episcopal Church, South. He came to Japan from China in 1886 to serve as the superintendent of the church's Japan Mission. He chose Kobe as the central base of the Mission, and founded Kwansei Gakuin in 1889. After leaving Japan in 1890, he spent his life evangelizing through education and medical work all over the world, including Africa, South America, Europe, and Asia. In the state of Mississippi, a monument built in his family's memory is inscribed with the words "World Citizen and Christian Apostle to many lands."



## The School Symbol

The crescent moon, which was adopted as the symbol of the school in 1894, represents the journey of the students of Kwansei Gakuin as they grow to fullness in knowledge and wisdom. In addition, the crescent moon represents the students and graduates of Kwansei Gakuin as they spread God's blessings like a light, just as the moon reflects the brilliant rays of the sun.

## The School Motto "Mastery for Service"

"We aim to be strong, to be masters—masters of knowledge, masters of opportunity, masters of ourselves, our desires, our ambitions... But having become masters, we desire not to inflate, and enrich ourselves for our own sake, but to render some useful service to humanity in order that the world may be better for our having lived in it." (Dr. Cornelius John Lighthall Bates, 1915)  
The motto of Kwansei Gakuin, coined by Dr. C.J.L. Bates, the fourth Chancellor of Kwansei Gakuin and the first President of Kwansei Gakuin University, reflects the ideal for all its members to master their abundant God-given gifts to serve their neighbors, society and the world.



Dr. Cornelius John Lighthall Bates



The clock tower in 1925



The clock tower today

## School Building Architecture

When designing the Nishinomiya Uegahara Campus, William Merrell Vories, an American missionary and architect, focused on realizing the ideals espoused by Dr. Lambuth by taking inspiration from the Spanish Mission Style, which symbolically embodies the advancement of Christian education. Featuring buildings that share the same distinct color scheme, with red tile roofs and cream-colored outer walls, the Vories architectural style has also been inherited by the new campuses.



# The Kwansei Grand Challenge 2039, Our Resolve for the Future

In preparation for the 150th anniversary of the founding of Kwansei Gakuin in 2039, we have formulated the “Kwansei Grand Challenge 2039” (KGC2039), a vision of what Kwansei Gakuin should be, and what measures we should actively take to make it a reality. This initiative is based on our mission statement, “to nurture global citizens who embody Mastery for Service,” and outlines what knowledge, abilities and qualities students should acquire at Kwansei Gakuin, as well as what they should do to acquire them. In the future, the world's population will explode, while Japan's population will shrink due to the declining birthrate and aging population. At the same time, the development of information and communication technology, such as Artificial Intelligence (AI) and Digital Transformation (DX), is drastically changing society and our lives. In addition, while economic and cultural activities across national

borders are increasing, there are also forecasts of chaotic scenes, with protectionist movements and ethnic conflicts, environmental destruction, and growing inequality. In order to survive in these uncertain times, there is a litany of skills that graduates will need, which have been termed the “Kwansei Competencies,” in addition to a broad range of knowledge and expertise. In the KGC2039, Kwansei Gakuin has established strategies to ensure that students acquire the skills necessary to play an active role in society (acquisition of learning outcomes), and the university has established mechanisms to guarantee that students attain those skills (guarantee of student quality) and assist them in achieving the employment and career path they desire (high-quality employment). By implementing these measures, we aim to ensure that all of Kwansei Gakuin's graduates will be able to lead truly abundant lives.

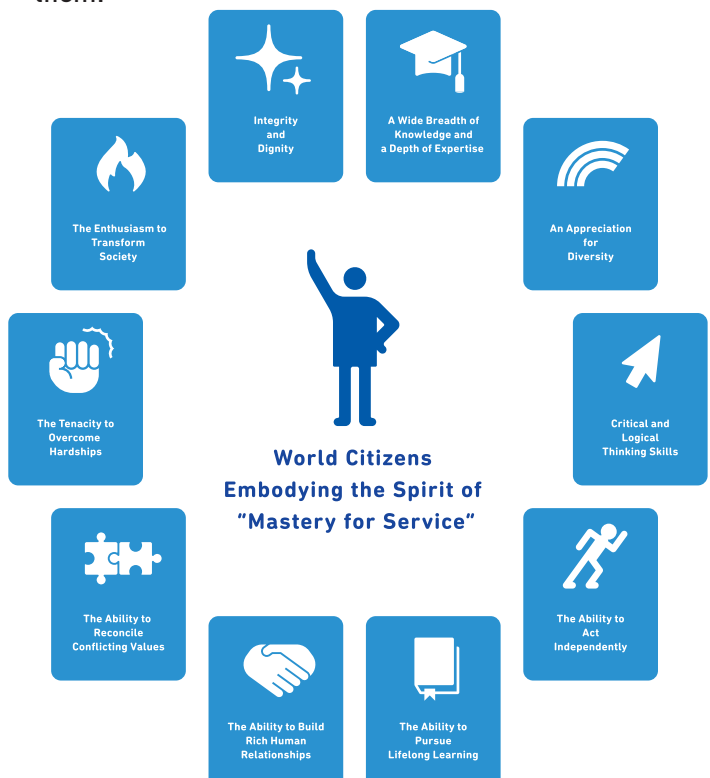
## Nine Categories in the KGC2039

In this future plan, we created the following nine categories, establishing 40 themes, and are moving forward with over 120 projects.

- ▶ Educational Ideals  
(Foster individuals who can approach global issues with strength and dignity)
- ▶ Undergraduate Education  
(Build the foundation for a fulfilling and meaningful life through contribution to the local community and global society)
- ▶ Graduate Education  
(Educate researchers and exceptional professionals who can devote effort to society's demands)
- ▶ Research  
(Create world-class research in a competitive environment)
- ▶ Comprehensive and Integrated Education  
(Secure Kwansei Gakuin's ideal as a comprehensive integrated educational institution through sharing the spirit of foundation)
- ▶ Industry-Government-Academia Collaboration  
(Enhance the Kwansei Gakuin brand value in top-notch education and research through strengthening links with the industry and government)
- ▶ Internationalization  
(Evolve Kwansei Gakuin's traditions of internationalization to a level of excellence)
- ▶ School Management  
(Establish a comprehensive management system through governance reform)
- ▶ Digital Transformation (DX)  
(Reform education, research and services through digital technology, and improve their quality and value)

## The Kwansei Competencies

The “Kwansei Competencies,” which comprise the knowledge, skills, and quality of character that all students should acquire by the time of graduation—irrespective of their department—are positioned as the underlying bedrock of education at the institution. Every student at Kwansei Gakuin should gradually acquire these Competencies and continue to build on them.





# Kwansei Gakuin University By the Numbers

# No.1

in Japan in the number of students studying abroad,  
with over

# 1,800

students doing so  
under partnership agreements in 2018

# 37

Selected as one of  
Top Global Universities in Japan

Collaborations  
with over

# 310

partner universities

and international  
organizations in

# 59

countries  
and regions

More than

# 130

years of history

Over

# 25,000

students

## A Top Global University in the Heart of Western Japan

In 2014, KGU was designated as one of the 37 universities to be supported under the Top Global University (TGU) Project, a ministerial funding scheme which aims to boost the international competitiveness of Japanese universities. Over the course of this decade-long project, KGU has focused on the following five areas to facilitate more substantial academic exchange for students, faculty and staff, both within Japan and overseas.

- ▶ Implementing the Dual Endeavor Program, which encourages all students to gain experience in addition to studying their majors



TOP GLOBAL  
UNIVERSITY JAPAN

- ▶ Becoming Japan's top university in terms of the number of students studying abroad under partnership agreements, with a goal of sending 2,500 students overseas annually in AY2023
- ▶ Establishing a quality assurance system which meets international standards
- ▶ Setting up a comprehensive management system through governance reform
- ▶ Serving as a gateway to the United Nations and other international organizations

Notably, KGU has strived for quantitative expansion and qualitative improvement in its efforts to send students overseas. Having developed and facilitated a wide array of quality-assured exchange programs with partner universities, KGU has managed to increase the number of participating students from 895 in AY2013 to 1,962 in AY2018 and 1,832 in AY2019. In AY2018, with five years remaining until the target year, KGU achieved its goal of becoming the top university in



14 undergraduate schools

14 graduate schools

More than 1,400 international students from over 50 countries

First in Asia to dispatch students as UN Youth Volunteers, with over 100 students dispatched since 2004

Over 250,000 alumni, with 90 alumni association chapters in Japan and 29 chapters overseas

Japan in terms of the number of students studying abroad based on partnership agreements (according to a survey by the Japan Student Services Organization), and in AY2019 ranked a close second. Although the number of students studying abroad temporarily stagnated due to the COVID-19 pandemic, KGU fully resumed its study abroad programs in AY2022, and continues to be one of the top Japanese universities in this respect.

KGU's initiatives were recognized as Good Practice by the TGU Project Committee, which reviewed the Project's decade-long activities, and the university-wide nature of KGU's efforts was highly acclaimed. In AY2024 and beyond, following the Project's conclusion, KGU will continue to foster global citizens who embody the school motto of "Mastery for Service." KGU will maintain its commitment to sending students to partner institutions abroad and promote initiatives for boosting participation in mid-term and long-term study abroad programs, including bilateral exchange. Furthermore,

based on the foundation developed through the Project, KGU will actively work to accept international students – including those from partner institutions – and strive to expand opportunities for collaborative international learning in both regular and extracurricular education, in addition to pushing forward with internationalization efforts on campus.








# List of All Schools and Departments

Undergraduate Schools	Departments and Courses
School of Theology	<ul style="list-style-type: none"> <li>▶ Christian Missionary Work</li> <li>▶ Christian Thought and Culture</li> </ul>
School of Humanities	Culture and History Integrated Psychological Sciences Literature and Linguistics
School of Sociology	Sociology <ul style="list-style-type: none"> <li>▶ Contemporary Sociology</li> <li>▶ Quantitative Sociology</li> <li>▶ Qualitative Sociology</li> <li>▶ Anthropology and Folklore</li> <li>▶ Media and Communication</li> <li>▶ Social Psychology</li> </ul>
School of Law and Politics	Law Political Science <ul style="list-style-type: none"> <li>▶ Special Course for Legal Profession, Business Law and Public Service</li> <li>▶ Judicature and Business Law</li> <li>▶ Public Policy</li> <li>▶ Global Law and Politics</li> <li>▶ Society and History of Law and Politics</li> </ul>
School of Economics	Economics
School of Business Administration	<ul style="list-style-type: none"> <li>▶ Management</li> <li>▶ Accounting</li> <li>▶ Marketing</li> <li>▶ Finance</li> <li>▶ Business Information</li> <li>▶ International Business</li> </ul>
School of Human Welfare Studies	Social Work Social Organization Development Holistic Human Sciences
School of International Studies	<ul style="list-style-type: none"> <li>▶ International Studies</li> </ul>
School of Education	<ul style="list-style-type: none"> <li>▶ Studies in Early Childhood Education</li> <li>▶ Studies in Elementary Education</li> <li>▶ Studies in Educational Science</li> </ul>
School of Policy Studies	Policy Studies Applied Informatics Urban Studies International Policy Studies
School of Science	Mathematical Sciences Physics and Astronomy Chemistry
School of Engineering	Materials Science Electrical and Electronic Engineering Computer Science Artificial Intelligence and Mechanical Engineering
School of Biological and Environmental Sciences	Biosciences Biomedical Sciences Applied Chemistry for Environment
School of Architecture	Architecture



Graduate Schools	Departments and Courses
Graduate School of Theology	
Graduate School of Humanities	School Education Philosophy and Ethics Aesthetics and Art Studies Geography and Area Studies Japanese History Asian History European and American History Psychological Science Japanese, English, French, and German ▶ Literature and Linguistics
Graduate School of Sociology	
Graduate School of Law and Politics	Academic Course (Master's level) Expert Course (Master's level) Political Science (Doctoral level) Basic Studies of Law (Doctoral level) Civil and Criminal Law (Doctoral level)
Graduate School of Economics	Economics
Graduate School of Business Administration	Specialized Academic Course (Master's level) Research Course (Doctoral level)
Graduate School of Science and Technology	Mathematical Sciences Physics Nanotechnology for Sustainable Energy Chemistry Applied Chemistry for Environment Bioscience Biomedical Chemistry Informatics Human System Interaction
Graduate School of Policy Studies	Policy Studies
Graduate School of Language, Communication, and Culture	Linguistic Science Language and Cultural Studies ▶ Regional Cultural Studies Program ▶ Interdisciplinary Multilingual and Multicultural Studies Program ▶ Media and Drama Studies Program Language Education Japanese Language Education ▶ Academic Program ▶ Professional Program ▶ Japanese Studies Double-Degree Program
Graduate School of Human Welfare Studies	Human Welfare Studies
Graduate School of Education	Research on Infant and Early Childhood Education Research in Inclusive and Collaborative Education
Graduate School of International Studies	North American Studies Asian Studies Global Studies
Law School	
Institute of Business and Accounting	Business School ▶ Corporate Management Strategy Course ▶ International Management Course Accounting School Graduate Department of Advanced Management

Undergraduate Schools	Graduate Schools	Institute of Business and Accounting
		

# University Campuses

Kwansei Gakuin offers an integrated education from kindergarten to graduate school in its capacity as a comprehensive educational institution. Kwansei Gakuin University's main campus is located in the city of Nishinomiya in Hyogo Prefecture, and the university also has other campuses in the cities of Nishinomiya, Sanda, Osaka, and Tokyo.

## Nishinomiya Uegahara Campus

- ▶ School of Theology
- ▶ School of Humanities
- ▶ School of Sociology
- ▶ School of Law and Politics
- ▶ School of Economics
- ▶ School of Business Administration
- ▶ School of Human Welfare Studies
- ▶ School of International Studies
- ▶ Graduate School of Language, Communication, and Culture
- ▶ Institute of Business and Accounting



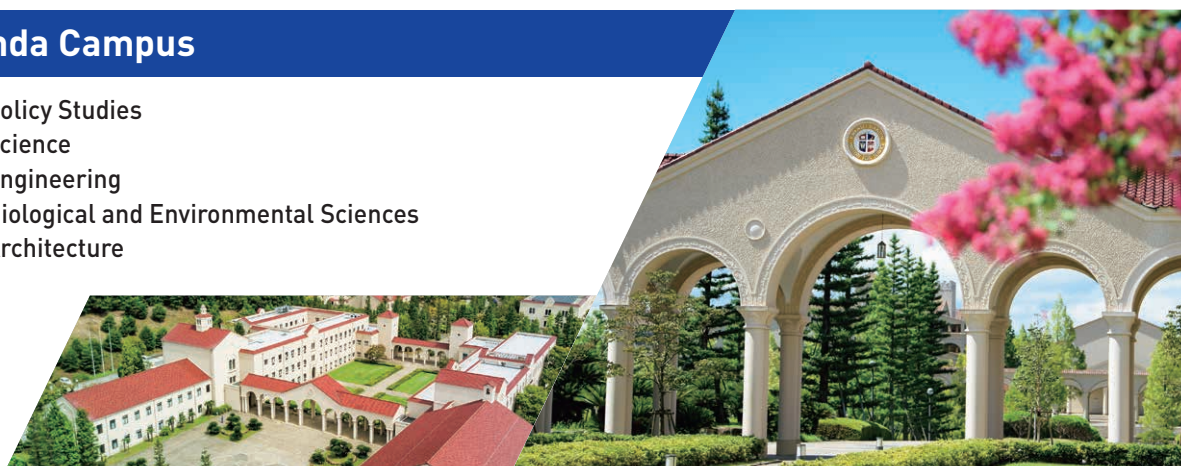
## Nishinomiya Seiwa Campus

- ▶ School of Education



## Kobe Sanda Campus

- ▶ School of Policy Studies
- ▶ School of Science
- ▶ School of Engineering
- ▶ School of Biological and Environmental Sciences
- ▶ School of Architecture





The Nishinomiya Uegahara Campus is renowned as one of the most beautiful university campuses in the entire country, the campus has maintained the idea behind its original design layout since 1929. The campus won a Total Design achievement award from the Architectural Institute of Japan in 2017 for successfully preserving its fundamental architecture, while simultaneously modernizing and upgrading its facilities.

## Nishinomiya Kitaguchi Campus

- ▶ Law School
- ▶ School of Humanities Center for Psychological Services and Research



## Osaka Umeda Campus

- ▶ Institute of Business and Accounting
- ▶ Courses for Working People
- ▶ Student Job Hunting Support
- ▶ Lifelong Learning
- ▶ Study Groups



## Tokyo Marunouchi Campus

- ▶ Student Job Hunting Support
- ▶ Lifelong Learning
- ▶ Study Groups



# Learning at KGU

Kwansei Gakuin University aims to develop human resources who can boldly confront and try to resolve the serious challenges humanity faces today, such as war, hunger, and environmental destruction. Carrying on the will of founder Dr. Walter Russell Lambuth, the university trains people who will be able to transform society with compassion and integrity.

## AI Personnel Development Program



- ▶ This program is a collaboration with IBM Japan to train professionals with the requisite competencies for working in the age of AI, such as data science-related knowledge and skills
- ▶ Participants have a myriad of opportunities to work on practical exercises relating to challenges that can be found in the business world, as well as face-to-face Project-Based Learning sessions to propose solutions to real challenges faced by companies

## Entrepreneur Training Program



- ▶ This program is designed to equip students with the tools to launch their own businesses, featuring measures such as courses taught by KGU alumni who have gone on to become CEOs at major companies
- ▶ It offers various extracurricular activities for nurturing students' abilities when it comes to creating, refining and executing business plans, such as the Startup Academy at the Kobe Sanda Campus

## Hands-On Learning Program



- ▶ This is a unique program in which students ask the questions that need to be asked in modern society, then take action, with projects in over 30 regions and organizations
- ▶ Participants learn about issues faced by local communities, and develop their own ideas to contribute to solving those challenges
- ▶ Through experiential learning, students gain not only simple work experience, but also a real sense of self-growth



In addition to specialized undergraduate education, the university promotes global education, including language programs and various study abroad programs, and actively provides education which opens up possibilities for students to engage with fields other than their specialization, as well as programs for students to make tangible contributions to society in Japan and overseas.

## Gateway to the UN and Int'l Organizations



- ▶ Students have opportunities to gain the skills needed by global professionals through participation in the UN Youth Volunteers program
- ▶ Since 2004, KGU has continued to dispatch volunteers to UN offices overseas to handle assignments in areas such as public relations
- ▶ The Graduate Department of UN System Policy Studies, which will launch in AY 2025, will systematically develop students into professionals who can take on leadership roles at international organizations

## "Mastery for Service" Volunteer Work



- ▶ Kwansei Gakuin's motto of "Mastery for Service" reflects the ideal for all its members to master their gifts in order to serve their neighbors, society, and the world
- ▶ Various activities are available for students to strive to embody this ideal, such as volunteerism in disaster-hit areas and support for children in rural communities
- ▶ The Human Services Support Office assists student volunteer groups as they engage in social contribution activities

## Extracurricular Education



- ▶ The university offers a myriad of ways for students to lead rich lives and forge strong connections with others through athletics and other extracurricular activities
- ▶ There are approximately 200 student clubs and circles across the entire university
- ▶ KGU's American football team, the Fighters, is notable for having won the Koshien Bowl, the Japanese national collegiate championship, a record 34 times

# Major Initiatives at KGU

The Christianity-based education valued by Kwasei Gakuin is about understanding and respecting the diversity of other people and other cultures, having a global perspective and working toward reforms for a sustainable society, and knowing who to become in order to achieve those aims. As the world continues to grow more global and more interconnected, the up-and-coming generation of young people is being pressed to solve global issues.

## Robust Career Education and Support



- ▶ With 99.7% of alumni finding a job immediately after graduation, KGU is one of the top-ranked private universities in Japan in terms of alumni employment
- ▶ In addition to counseling, the Center for Career Planning and Placement offers various ICT services to support students in their job hunting activities, including online advisory sessions and seminars

## Dual Endeavor Program



- ▶ All students must learn competencies outside of their School by choosing to participate in international programs, minor programs, or Hands-On Learning
- ▶ Through these experiences, students will acquire multiple perspectives and cultivate competencies such as self-sufficiency and an understanding of diversity
- ▶ Students can choose from a wide range of active learning, service-learning and project-based learning programs under the Global Academic Port initiative

## Promotion of the Sustainable Development Goals



- ▶ The Kobe Sanda Campus (KSC) is a major hub for research on topics such as fuel cells and smart cities, with the aim of promoting affordable and clean energy
- ▶ Researchers at KGU have been making progress in areas such as the development of new functional nano-materials for sustainable power sources
- ▶ Going forward, the four science-based schools and the humanities-oriented School of Policy Studies will combine their research findings and strive to make a sustainable society a reality



Through education, KGU will continue to develop such World Citizens who are up to the task of doing so; graduates who are equipped with a broad base of knowledge, in-depth expertise, and the ability to keep learning over the course of their lifetimes. KGU is pushing forward with various initiatives in order to achieve this aim, with a particular focus on digital technology and sustainability.

## Industry-Academia-Government Collaboration



- ▶ Researchers at KGU are engaged in active collaborations with companies and government organizations on projects such as the development of more energy-efficient semiconductors
- ▶ KGU is working to contribute to energy efficiency and carbon neutrality by leveraging the extensive business connections of its partners to encourage a wide range of clients and manufacturers to participate in the development of such technology

## Global Network



- ▶ A variety of opportunities for students to become World Citizens are available through study abroad programs and overseas volunteer opportunities
- ▶ Each year, KGU welcomes exchange students from over 310 partner universities and international organizations around the world
- ▶ In order to expand opportunities for KGU students to form bonds with international students, KGU opened a new international education dormitory, Yukoryo, in 2022

## KSC Co-Creation Village (C-Village)



- ▶ The C-Village, which is scheduled to open in 2025, combines a dormitory with an incubation facility and commercial facilities
- ▶ The C-Village was designed with the aim of fostering an environment for collaboration with local residents and businesses
- ▶ The planned incubation facility will serve as a space to train entrepreneurs, apply research results to the real world, and contribute to regional revitalization

# International Exchange Programs

## Cross-Cultural College (CCC)



- ▶ KGU operates the CCC in collaboration with four Canadian universities
- ▶ The CCC is built around practical learning, wherein which Canadian and Japanese students work together to understand and address critical issues in both societies
- ▶ The program features two core courses for students to participate in internships, as well as problem-solving activities related to business

## Contemporary Japan Program (CJP)



- ▶ The CJP, specially designed for incoming exchange students, offers two study tracks: the Japanese Language Track (JLT) and the Modern Japan Track (MJT)
- ▶ JLT students primarily study the Japanese language in an intensive environment, while MJT students focus on understanding Japan through courses taught in English
- ▶ Students are able to select elective courses to learn more about various aspects of contemporary Japan

## Intensive Language and Culture Study Program



- ▶ This program, available every summer and winter, enables students from partner institutions to improve their Japanese language skills while learning about Japanese culture
- ▶ KGU student volunteers known as Nihongo Partners will participate in classes as teaching assistants, as well as collaborators for project-based studies in Japanese
- ▶ Participants will have opportunities to experience Japanese culture through field trips and activities

## Summer School (5 weeks) / Winter School (3 weeks)



- ▶ The Summer School program, taught by KGU faculty and visiting professors from partner institutions, offers various courses, flexible learning, and fieldwork
- ▶ The Winter School program does not require any Japanese language skills, and is designed for students who wish to learn about "Cool Japan"

For more information about programs available for our partner institutions' students, refer to the Center for International Education and Cooperation website.





# Programs Offered in English

## International Management Course (IMC) at the Institute of Business and Accounting



- ▶ Established in 2005, the IMC is an MBA program that measures up to global standards, with an emphasis on both individual and professional growth
- ▶ The course is composed of four specialized study programs: Management, Marketing, Finance, and Family Business Management
- ▶ The student body at the IMC is exceptionally diverse, with a 7:1 ratio of international students to Japanese students

## Graduate Department of UN System Policy Studies (to be launched in AY2025)



- ▶ The Graduate Department of UN System Policy Studies will systematically develop students into professionals who can take on leadership roles at international organizations through a curriculum based on the UN Competency Framework, the recruitment criteria for UN officers
- ▶ The program will offer courses in fields such as global governance, international organizational theory, human rights, gender, and international development

## International Masters Program at the Graduate School of Science and Technology



- ▶ There are six Masters courses offered for international students: Physics, Nanotechnology for Sustainable Energy, Chemistry, Applied Chemistry for Environment, Bioscience, and Biomedical Chemistry
- ▶ The program is designed to foster students who can synthesize knowledge to conceive of innovative ideas, then implement research plans
- ▶ The Graduate School also offers an extended program for doctoral degrees

## English-Based Degree Program at the School of International Studies (SIS)



- ▶ The SIS offers a full range of specialized courses in English to equip students with the ability to understand and analyze issues relating to international affairs
- ▶ Students admitted through English-based International Admission can meet graduation requirements by mainly taking classes taught in English
- ▶ Students are encouraged to examine the wider world through historical and contemporary insights, using three approaches: culture and language, society and politics, and economics and management

## EUROPE

### ▶ Austria

Fachhochschule Kufstein  
Tirol-University of Applied Sciences  
University of Innsbruck

### ▶ Belgium

Catholic University of Louvain  
Ghent University

### ▶ Croatia

University of Split

### ▶ Czech Republic

Masaryk University  
University of Ostrava  
University of Pardubice

### ▶ Denmark

Aarhus University  
University of Southern Denmark  
VIA University College, Department of Social Education

### ▶ Finland

Metropolia University of Applied Sciences  
University of Vaasa

### ▶ France

Burgundy School of Business  
ECE Paris, Graduate School of Engineering  
Lumiere University of Lyon 2  
Normandy Business School  
Sciences Po Lyon  
The Institute of Political Science  
Saint-Germain-en-Laye  
University Paris-Est Creteil  
University of Franche-Comte  
University of Lille  
University of Montpellier  
University of Orleans  
University of Paris  
University of Paris-Est

### ▶ Germany

European University Viadrina  
Friedrich Schiller University Jena  
Friedrich-Alexander University of Erlangen-Nurnberg  
Heinrich Heine University Düsseldorf  
Hochschule für Technik und Wirtschaft in Berlin  
University of Applied Sciences (HTW Berlin)  
Johannes Gutenberg University Mainz  
Julius-Maximilians-Universität Würzburg  
Ruhr University Bochum  
University of Augsburg  
University of Bremen  
University of Cologne  
University of Mannheim  
University of Regensburg  
University of Siegen  
Witten / Herdecke University

### ▶ Hungary

The University of Pecs

### ▶ Iceland

University of Iceland

### ▶ Ireland

Dublin City University

### ▶ Italy

Ca' Foscari University of Venice  
Marche Polytechnic University  
Sapienza University of Rome  
University of Bergamo  
University of Bologna  
University of Naples Federico II  
University of Parma

### ▶ Latvia

University of Latvia

### ▶ Lithuania

Kaunas University of Technology  
Vytautas Magnus University

### ▶ Netherlands

Avans University of Applied Sciences  
Hanze University of Applied Sciences Groningen  
Niod, Institute for War, Holocaust and Genocide Studies  
Radboud University Nijmegen  
The Hague University of Applied Sciences

### ▶ Norway

Norwegian University of Science and Technology  
University of Oslo

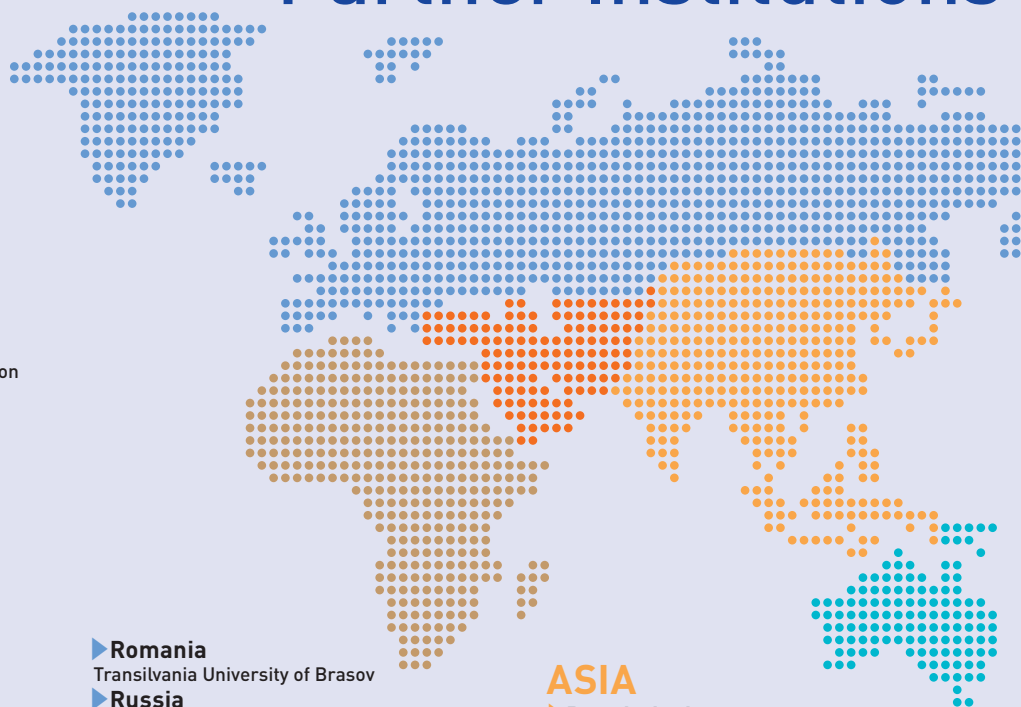
### ▶ Poland

Cracow University of Economics  
University of Lodz  
Wroclaw University

### ▶ Portugal

University of Lisboa

# Partner Institutions



### ▶ Romania

Transilvania University of Brasov

### ▶ Russia

National Research University,  
Higher School of Economics

### ▶ Spain

Autonomous University of Barcelona  
Autonomous University of Madrid  
Pompeu Fabra University  
University of Alicante  
University of Zaragoza

### ▶ Sweden

Linköping University  
Linnaeus University  
Malardalen University  
Stockholm University

### ▶ Switzerland

Eastern Switzerland University of  
Applied Sciences  
University of Bern  
University of Zurich

### ▶ U.K.

Aberdeen Business School,  
Robert Gordon University  
Bristol University  
Cardiff University  
De Montfort University  
Homerton College, University of Cambridge  
Keele University  
Magdalene College, University of Cambridge  
Oxford University  
The University of Birmingham  
The University of Manchester  
University of Central Lancashire  
University of Edinburgh  
University of Essex  
University of Hertfordshire  
University of Leicester  
University of London  
School of Oriental and African Studies (SOAS)  
University of Stirling  
York St John University

## MIDDLE/NEAR EAST

### ▶ Iran

University of Kurdistan

### ▶ Turkey

Kocaeli University

## AFRICA

### ▶ Rwanda

Kiseki Corporation Ltd.  
Protestant Institute of Arts and Social Sciences

### ▶ Zimbabwe

Africa University

## ASIA

### ▶ Bangladesh

University of Chittagong

### ▶ Cambodia

Cambodian Human Rights and  
Development Association  
Royal University of Phnom Penh

### ▶ China

Beijing International Studies University  
East China Normal University  
Fudan University  
Hunan University  
Jilin University  
Nanjing University  
Renmin University of China  
Shanghai Jiao Tong University  
Shanghai University  
Sichuan University  
Soochow University  
Southwest University  
Sun Yat-Sen University  
The Chinese University of Hong Kong, Shenzhen  
Xi'an International Studies University  
Zhejiang Normal University

### ▶ China/Hong Kong

The Chinese University of Hong Kong  
Hong Kong Baptist University

### ▶ China/Macau

University of Macau

### ▶ India

Amity University  
Indian Institute Technology Indore  
Jawaharlal Nehru University  
O.P. Jindal Global University

### ▶ Indonesia

Diponegoro University, Faculty of  
Fisheries and Marine Science  
Indonesia University of Education  
IPB University  
Ma Chung University  
Padjadjaran University  
Petra Christian University  
Satya Wacana Christian University  
Universitas PGRI Semarang  
University of Udayana

### ▶ Japan

International Medical Volunteers Japan Heart

### ▶ Korea

Catholic University of Korea  
Chonbuk National University  
Chung-Ang University  
Dong-a University  
Dongguk University  
Ewha Womans University  
Hankuk University of Foreign Studies  
Hannam University  
Hanyang University



# Around the World

as of April 2024



## OCEANIA

### Australia

- Curtin University
- James Cook University
- La Trobe University
- Macquarie University
- Murdoch University
- Southern Cross University
- The University of Adelaide
- The University of Melbourne
- The University of Newcastle
- The University of New South Wales
- The University of Queensland
- The University of Sydney
- The University of Western Australia
- University of South Australia
- University of Technology Sydney
- University of Wollongong

### New Zealand

- The University of Waikato
- University of Canterbury
- University of Otago Language Centre (UOLC)

### Korea

- Kangwon National University
- Konkuk University
- Korea Institute for Industrial Economics and Trade
- Korea University Sejong Campus
- Kyung Hee University
- Methodist Theological University
- Pukyong National University
- Pusan National University
- Sogang University
- Sungshin Women's University
- University of Seoul
- Yonsei University

### Kyrgyz

- Kyrgyz Republic Japan Center
- Kyrgyz National University

### Malaysia

- Taylor's University
- University Tunku Abdul Rahman
- University of Malaya
- Universiti Sains Malaysia

### Mongolia

- Mongolia-Japan Center for Human Resources Development
- Mongolian University of Science and Technology
- National Academy of Governance, Mongolia, Department of Economics and Finance

### Myanmar

- Yangon University of Education

### Nepal

- Fair Trade Group (FTG) Nepal
- Himalayan Glory English Secondary School
- Tribhuvan University

### Philippines

- Ateneo de Manila University
- Cebu Doctors' University
- Nueva Vizcaya State University
- Silliman University

### Singapore

- Nanyang Technological University
- National University of Singapore
- Singapore Management University

### Taiwan

- Chang Jung Christian University
- Fu Jen Catholic University
- National Cheng Kung University
- National Chengchi University
- National Yang Ming Chiao Tung University
- National Taipei University
- National Taipei University of Education

### Taiwan

- National Taiwan Normal University
- National Taiwan Ocean University
- National Taiwan University
- Soochow University
- Tamkang University
- Tunghai University

### Thailand

- Assumption University
- Chiang Mai University
- Chulalongkorn University, Faculty of Economics
- Kasetsart University
- Mahidol University International College
- Payap University
- Rangsit University

### Timor Leste

- National University of Timor Leste

### Vietnam

- Foreign Trade University
- Ho Chi Minh University of Economics and Finance
- Thuongmai University
- VNU Vietnam Japan University
- Vietnam National University, University of Engineering and Technology
- Vietnam National University, University of Science

## NORTH AMERICA

### Canada

- Huron University College at Western University
- King's University College at Western University
- Memorial University of Newfoundland
- Mount Allison University
- Queen's University
- Simon Fraser University
- Trent University
- University of British Columbia
- University of Calgary
- University of Guelph
- University of Toronto / Victoria University
- University of Victoria, Peter B. Gustavson School of Business
- University of Waterloo

### U.S.A.

- Adelphi University
- American University Law School
- Bethel University, St. Paul Intercultural Institute
- Boston University Law School
- California State University, Long Beach

## CONSORTIUMS

- Association of Christian Universities and Colleges in Asia (ACUCA)
- The International Association of Methodist Schools, Colleges, and Universities (IAMSCU)
- The United Board for Christian Higher Education in Asia (UBCHEA)
- University Mobility in Asia and the Pacific (UMAP)
- Canada-Japan Strategic Student Exchange Program (JACAC)
- University Studies Abroad Consortium (USAC)

## UN ORGANIZATIONS

- United Nations Children's Fund (UNICEF)
- United Nations Development Programme (UNDP)
- United Nations Economic and Social Commission for Asia and the Pacific (ESCAP)
- United Nations High Commissioner for Refugees (UNHCR)
- United Nations Population Fund (UNPF)
- United Nations University Institute for the Advanced Study of Sustainability
- United Nations Volunteers (UNV)

### U.S.A.

- California State University, Stanislaus
- Central Washington University
- Creighton University
- Drake University
- Emory University
- Florida State University
- Georgetown University Law School
- Goucher College
- Hamline University
- Hendrix College
- Hofstra University Law School
- Macalester College
- Nazareth College
- Nebraska Wesleyan University
- North Carolina State University
- Ohio Northern University
- Pitzer College
- Presbyterian College
- San Diego State University
- San Francisco State University
- San Jose State University
- Sonoma State University
- Southern Methodist University
- Southern Oregon University
- Stetson University
- Suffolk University Law School
- Texas A&M University
- The University at Albany, State University of New York
- The Washington Center
- Trinity University
- University of California, Davis
- University of California, Irvine
- University of California, Riverside
- University of Hawaii at Manoa
- University of Illinois at Chicago
- University of Massachusetts Amherst
- University of Missouri, Columbia
- University of Nebraska at Kearney
- University of Nebraska at Omaha
- University of Nevada, Reno
- University of New Mexico
- University of North Carolina at Chapel Hill
- University of Pennsylvania English Language Programs
- University of San Francisco
- University of Washington Continuum College
- University of the Pacific
- Washington and Jefferson College
- Whitworth University

## CENTRAL AND SOUTH AMERICA

### Argentina

- University of Austral

### Brazil

- University of Sao Paulo
- Rio de Janeiro State University
- Londrina State University

### Colombia

- University of Antioquia
- EAFIT University

### Costa Rica

- The University for Peace

### Mexico

- National Autonomous University of Mexico
- University of Monterrey

# The Kansai Region

The Kansai region lies in the southern-central stretch of Japan's main island Honshu, and includes the prefectures of Mie, Nara, Wakayama, Kyoto, Osaka, Hyogo and Shiga. Hyogo Prefecture is where Kwansei Gakuin University's main campuses are

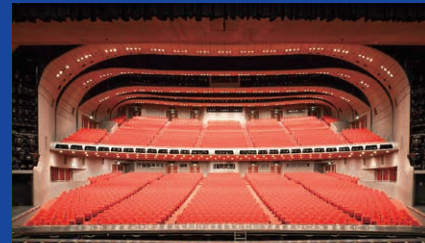
located. As part of one of the world's most productive economic areas, Hyogo is home to many thriving industries, as well as a UNESCO World Heritage Site (Himeji Castle). It also offers beautiful natural vistas, with three national parks and coastlines on two seas.



KOBE Port of Kobe



KOBE Weathercock House



TAKARAZUKA Takarazuka Revue



HIMEJI Himeji Castle



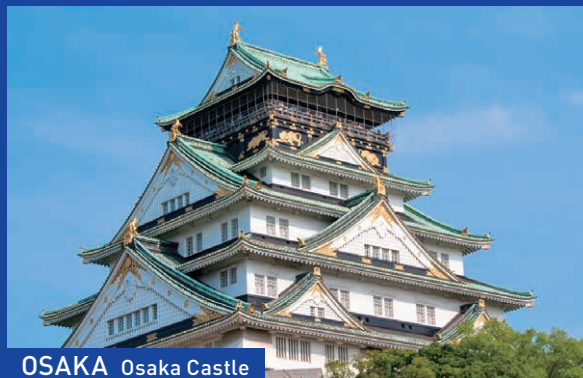
KYOTO Fushimi Inari Shrine



OSAKA Takoyaki



NAMBA Dotonbori

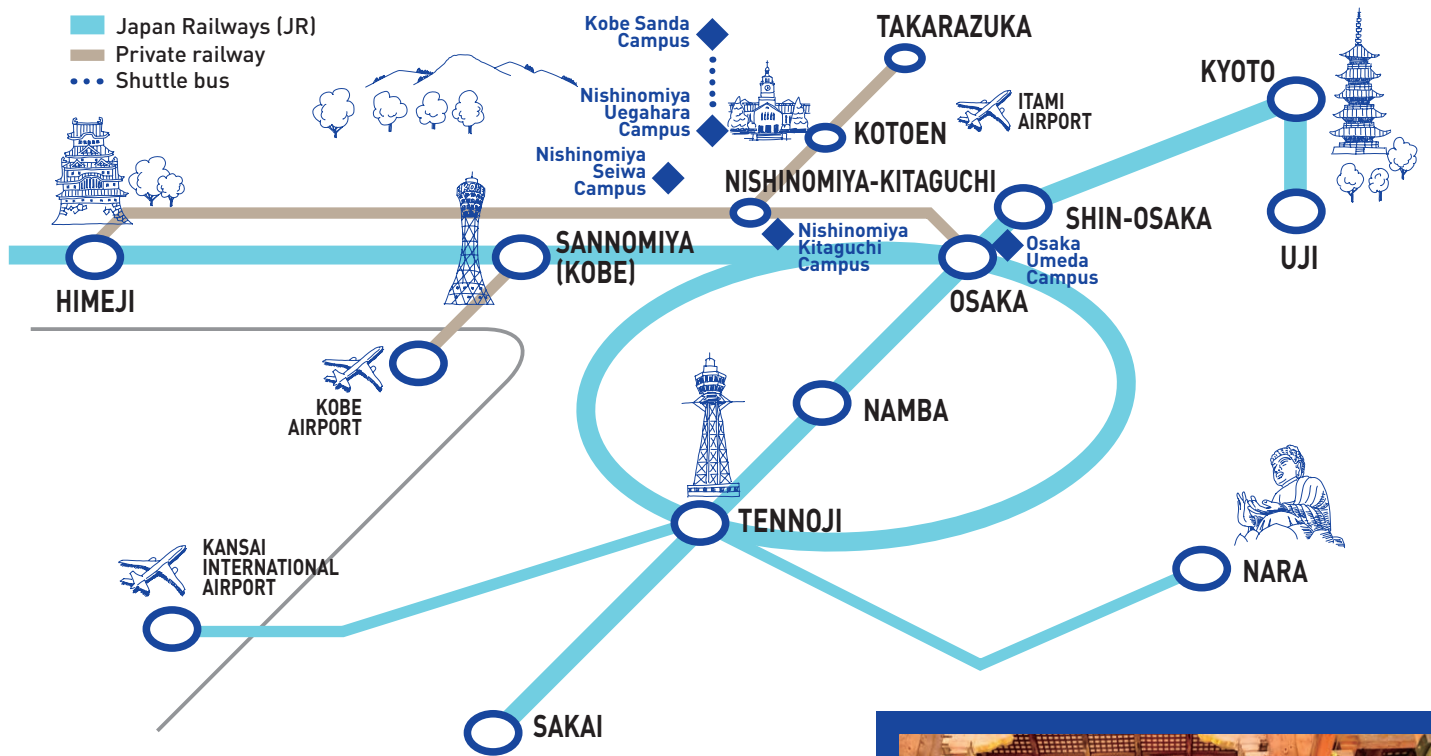


OSAKA Osaka Castle



TENNOJI Tsutenkaku Tower





UJI Uji Matcha



NARA Nara Park



NARA Todaiji Temple



KYOTO Gion Area



SAKAI Mozu-Furuichi Kofun Group



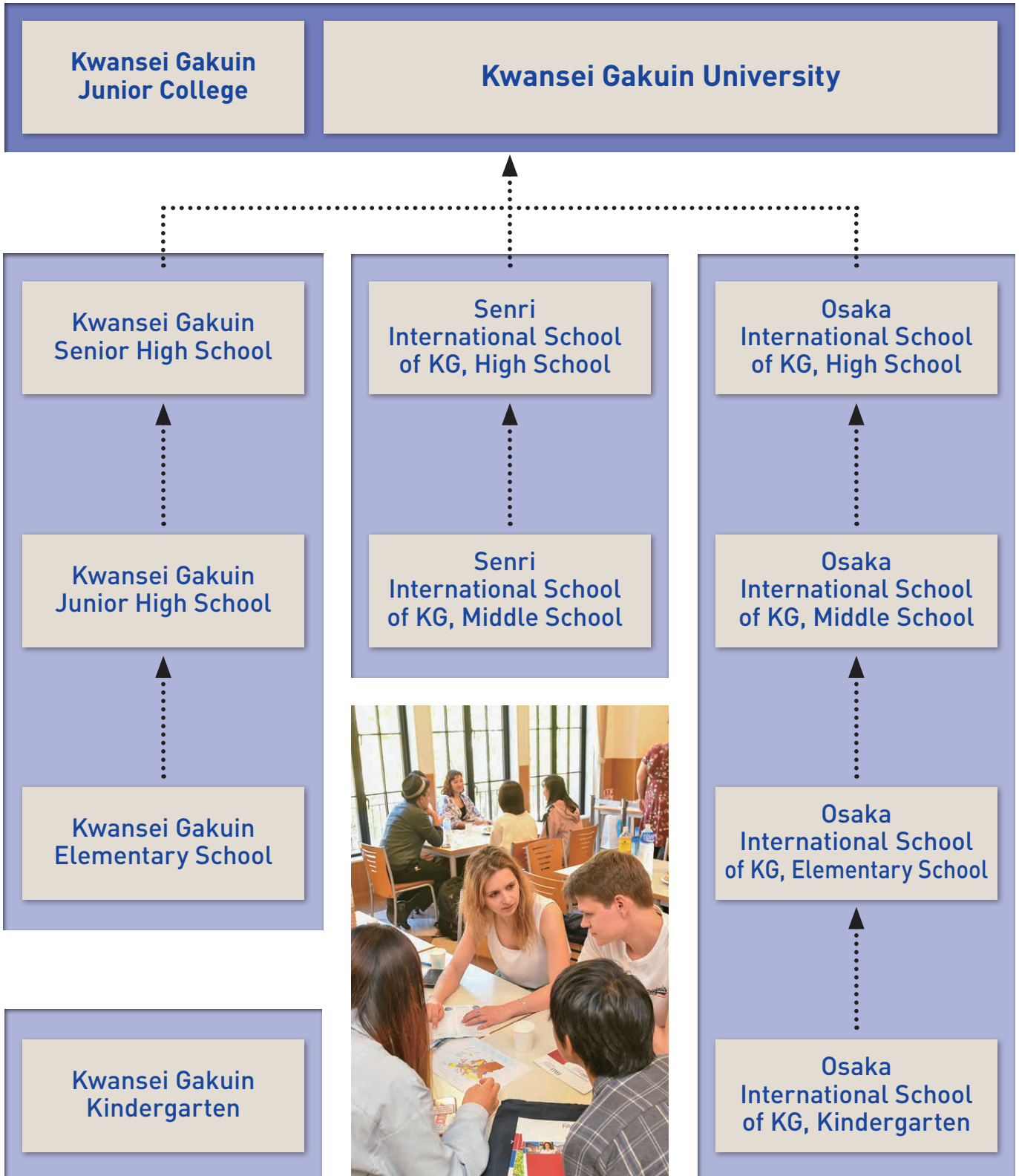
KYOTO Kiyomizu Temple

©Sean Pavone/123RF.COM

# Structure of Kwansei Gakuin

Kwansei Gakuin was founded in 1889 in Kobe, Japan by Dr. Walter Russell Lambuth (later Bishop), an American missionary of the Methodist Episcopal Church, South. It was intended to be a small private institution with two departments, a theological school and a middle school. In 1910, the Canadian Methodist Church and the Japanese Methodist Church joined its operation, and Kwansei Gakuin was able to open a

college with literary and commercial courses in 1912. Since moving to Uegahara in Nishinomiya in 1929, the school has continued to grow in size and stature. Today, the Kwansei Gakuin Educational Foundation operates a university with 14 undergraduate schools and 14 graduate schools, a junior college, junior and senior high schools, two international schools, an elementary school and a kindergarten.





For more information:  
<https://global.kwansei.ac.jp/>



 @KwanseiEnglish  
@KwanseiGakuin



(EN)



(JP)



@kwanseigakuinuniversity



@KwanseiGakuin



Campus information





**KWANSEI  
GAKUIN  
UNIVERSITY**  
**2024-2025 Overview**